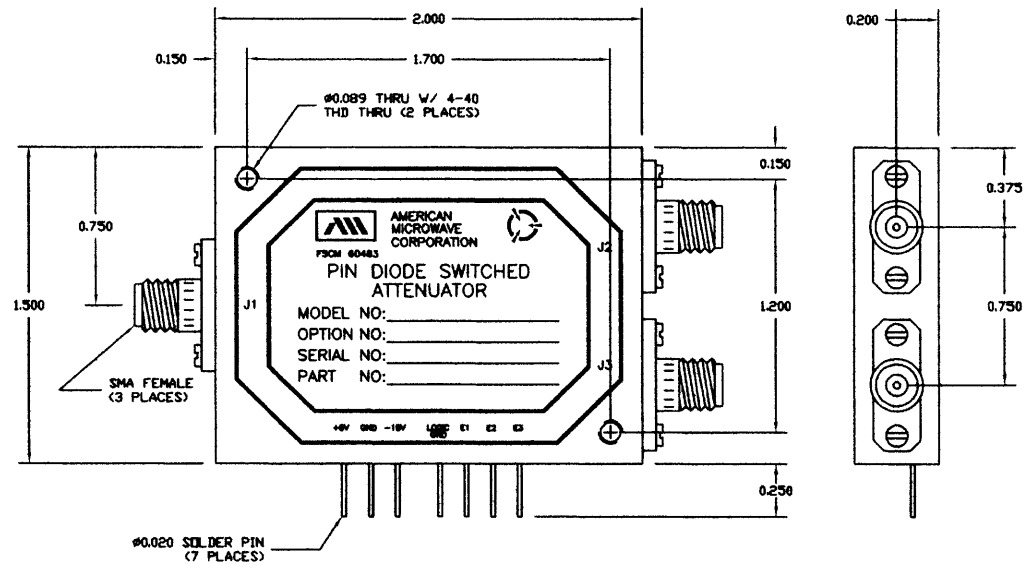


SPECIFICATIONS:

AMC MODEL NUMBER CS00225-02 IS A SINGLE POLE TWO THROW PIN DIODE MICROWAVE SWITCH WITH INTEGRAL TTL DRIVERS THAT SWITCHES BETWEEN THREE PATHS OF ATTENUATION, AND HAS A SWITCHED OUTPUT

- FREQUENCY: 0.15 GHz TO 20.25 GHz
- INSERTION LOSS: 6.5 dB MAX
6.0 dB TYPICAL
5.5 dB GOAL
- INSERTION LOSS: PATH #1 (I.L. ±1.50 dB)
(FLATNESS) PATH #2 (10.0 dB + I.L. ±1.75 dB)
PATH #3 (30.0 dB + I.L. ±2.25 dB)
- VSWR: 2.5:1 MAXIMUM
2.2:1 TYPICAL
- RF POWER RATING: +20 dBm CW MAXIMUM OPERATING
+23 dBm MAXIMUM WITHOUT DAMAGE
- SWITCHING TIME: 200 nSec MAXIMUM
- CONTROL LOGIC: TTL, POSITIVE TRUE (SEE LOGIC TABLE)
- CONNECTORS: SMA FEMALE (RF INPUT/OUTPUT)
SOLDER PIN (CONTROL/DC POWER)
- POWER SUPPLY: +5V @ 150 mA
-15V @ 100 mA

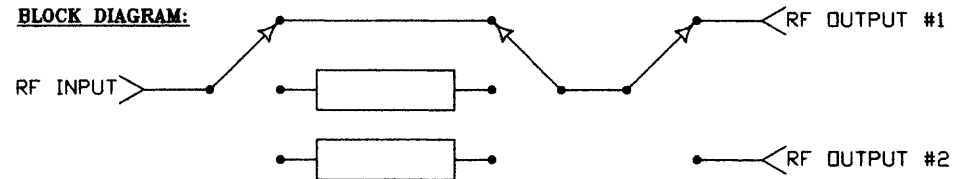
REVISIONS				
ZONE	REV.	DESCRIPTION	DATE	APPROVED
-	-	ORIGINAL JOB# 109160E	10/31/01	



LOGIC TABLE:

E3	E2	E1	SWITCHED PATH
X	0	0	#1, 0 dB
X	0	1	#2, 10 dB
X	1	0	#3, 30 dB
0	X	X	RF OUTPUT #1
1	X	X	RF OUTPUT #2

BLOCK DIAGRAM:



ENVIRONMENTAL RATINGS:

- TEMPERATURE: -55°C TO +85°C (OPERATING)
-65°C TO +125°C (STORAGE)
- HUMIDITY: 20% TO 95% NON-CONDENSING
- ALTITUDE: SEA LEVEL TO 10,000 ft (OPERATING)
SEA LEVEL TO 50,000 ft (NON-OPERATING)
- SHOCK: MIL-STD-202F, METHOD 213B COND. B
- VIBRATION: MIL-STD-202F, METHOD 204D COND. B
- TEMPERATURE CYCLE: MIL-STD-202F, METHOD 107D COND. A

ALL DIMENSIONS ARE IN INCHES
TOLERANCES:
X.XX ±0.020
X.XXX ±0.010

NOTE: THE ABOVE SPECIFICATIONS ARE SUBJECT TO CHANGE OR REVISION

CONTRACT NO.		AMERICAN MICROWAVE CORPORATION FREDERICK, MARYLAND		
APPROVALS	DATE	TITLE		
<i>KAB</i>	10/31/01	PRODUCT FEATURE CS00225-02 PIN DIODE SWITCHED ATTENUATOR		
CHECKED		SIZE	FSCM NO.	DWG NO.
		A	60483	100-6201
ISSUED		SCALE	N/S	REV. A
				SHEET 1 of 3